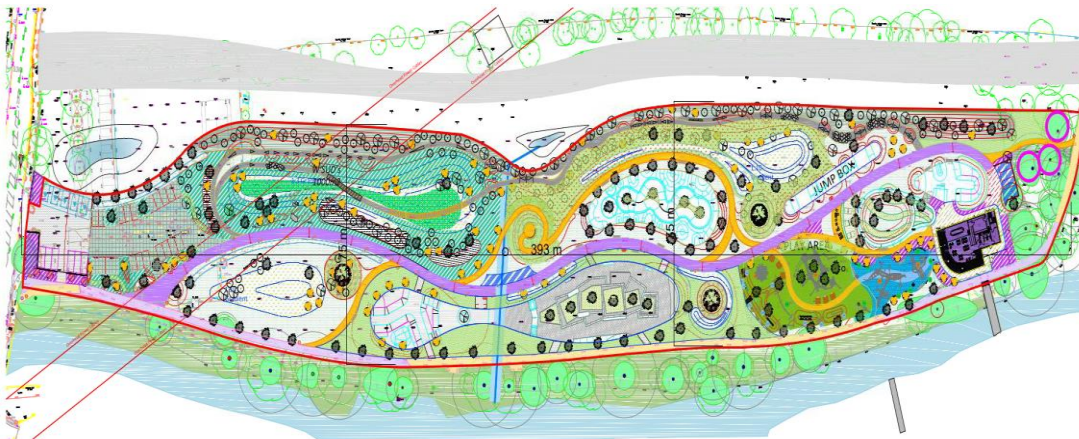




Oxhey Park North Recreation Facility

Site Map



Landscape proposals

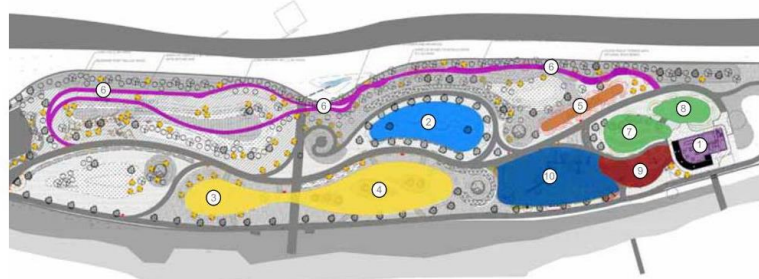
5.0 Landscape Proposals

5.1 Design Principles

5.1.1 Key Design Principles:

The masterplan for the scheme includes:

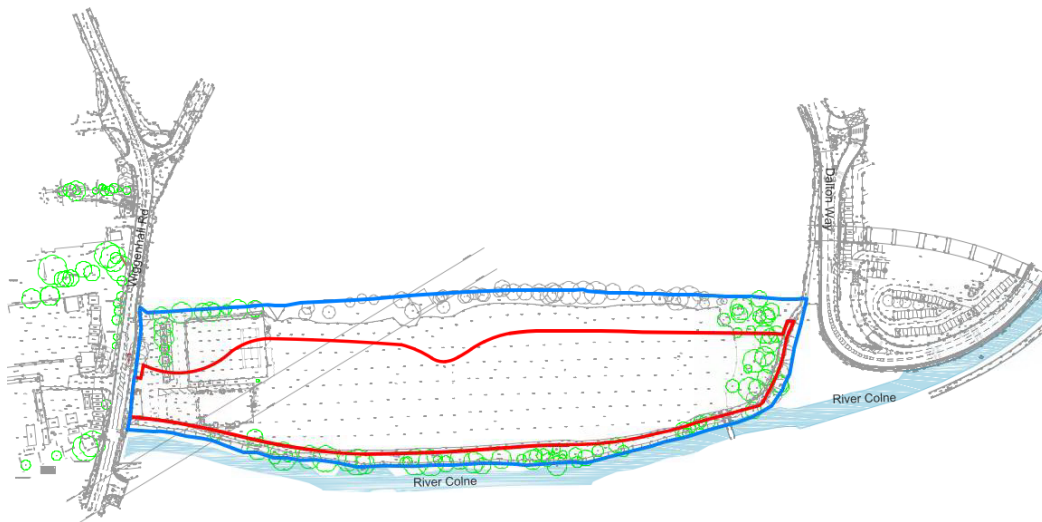
- ① Café facility with Riverside Terrace with Toilets
- ② Pumpscape - Skateboarding, Scooter, Blading & BMX facility
- ③ Flowpark (skatepark) - Skateboarding, Scooter, Blading & BMX facility
- ④ A Skateable Plaza - Skateboarding, Scooter, Blading & BMX facility
- ⑤ A Jumpbox - Skateboarding, Scooter, Blading & BMX facility
- ⑥ Mountain Bike and BMX Skills Track
- ⑦ Junior Bike Skills Area
- ⑧ Junior Skateboarding Skills Area
- ⑨ Toddler & Junior Play Area
- ⑩ Junior & Teen Play Area



The facilities for the site will be carefully designed landscape setting consisting of tree planting blocks, wildflower areas, sculptural mounding, pedestrian circulation routes, Emergency vehicular access and wetlands ponds.

(Please refer to Appendix One - 11.1 Southern Green Ltd Drawings)

Master plan



- Key**
- ▬ Site Boundary
 - ▬ Waford Borough Council Ownership Boundary



EXISTING FEATURES	PROPOSED FACILITIES	PROPOSED SOFTWORKS	PROPOSED ROUTES
1 Wetland Ponds	1 Café park hub building	9 Grass	Primary Routes
2 Pedestrian Footbridge	2 Café Terrace	10 Wildflower	Secondary Routes
3 Oxhey Park Steps	3 Viewing Mound	11 Trees	Site Entrance
4 National Cycle Route	4 Junior Bike Skills	12 Contours	
	5 Junior Skatepark skills		
	6 Toddler Play Area		
	7 Informal Play Area		
	8 Rhythm Section/Jump Box		
	9 Bike Trail		
	10 Flow Park (Skate Park)		
	11 Pumpscape(Transition Bmx / skate facility)		
	12 Plaza with skatable elements		
		13 Drinking Fountain	
		14 Table Tennis Tables	
		15 Proposed Car Park with Disability spaces	

Cafe

